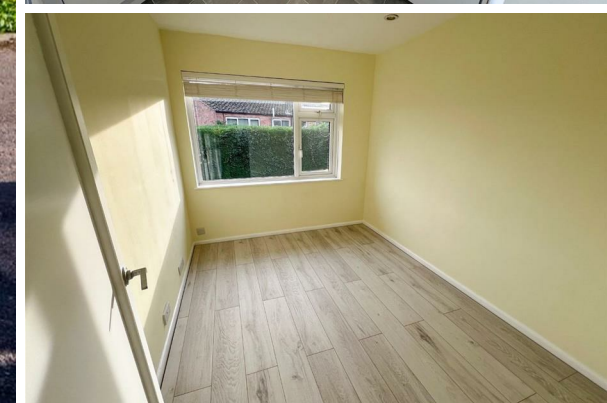




Redmayne Arnold & Harris
estate agents, letting agents & surveyors

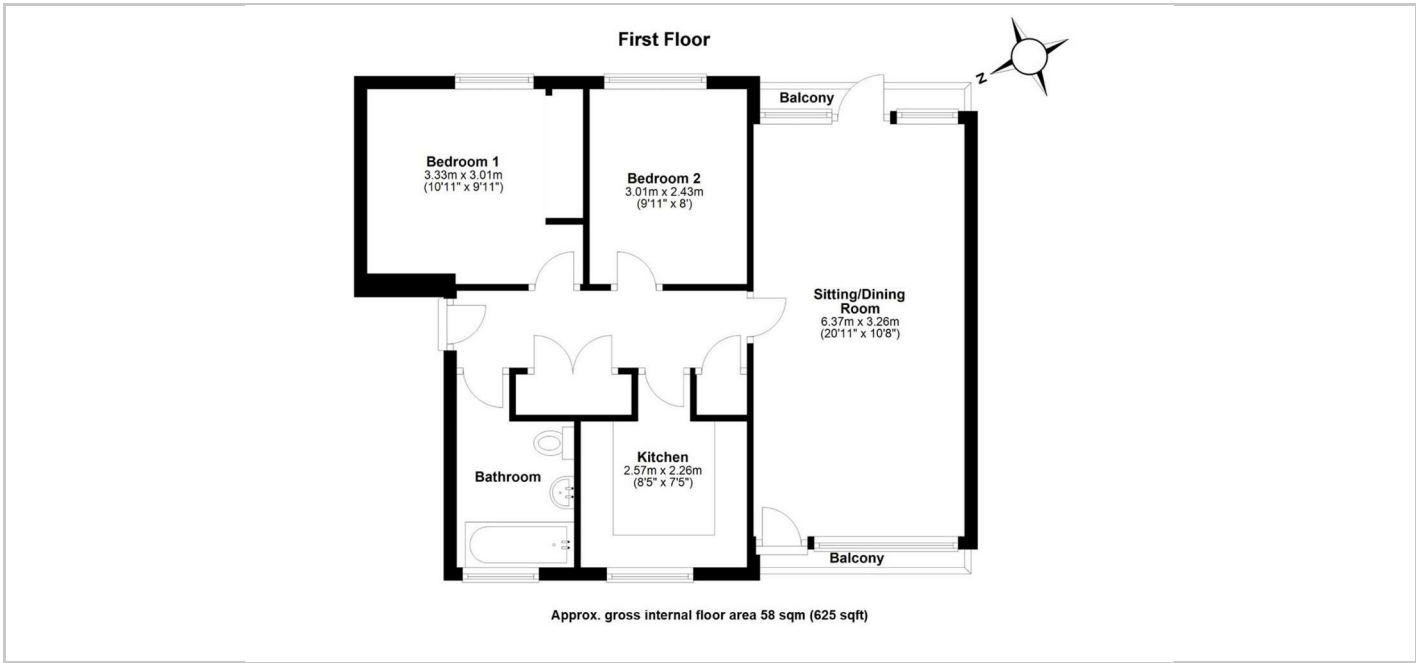
rah.co.uk



Flat 12, Granhams Court De Freville Road, Great Shelford, Cambridge, Cambridgeshire, CB22 5LH

£1,400

- No onward chain
- Refitted bathroom
- New boiler
- Long lease
- Ideal for first time buyers
- Two double bedrooms
- New double glazing
- Garage
- EPC - C / 73



Directions

THE PROPERTY

A very well presented and recently renovated, two-bedroom apartment in this sought-after village, ideally located for Great Shelford train station, the DNA path leading to the Addenbrooke’s/Biomedical Campus and local amenities.

The accommodation comprises of a hallway with two large storage cupboards, a sitting/dining room with a patio door leading you out to balcony, a kitchen with a range of wall and base units with an integrated double oven, hob, inset sink with mixer tap, washer drier and fridge freezer. Completing the accommodation, there are two double bedrooms and a bathroom, which comprises of a bath with shower over, WC and wash basin.

Outside there is a driveway leading to a single garage en-bloc and to the rear of the block there are pretty communal gardens, laid mainly to lawn with a variety of mature trees and shrubs.

EPC rating: C
Council tax Band: B
Minimum 12 Month Tenancy
Deposit: £1610
Holding Deposit: £350

SITUATION

